

CFA

COMPACT FAN AIR



DIMENSIONI (mm) • SIZE (mm) • DIMENSIONES (mm)

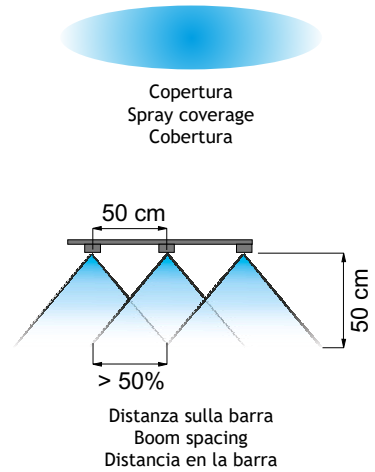
UTILIZZO • USE • UTILIZACIÓN

Herbicides
Suitable for

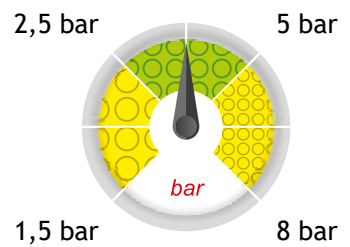
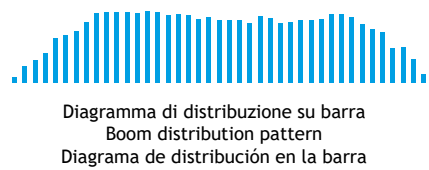
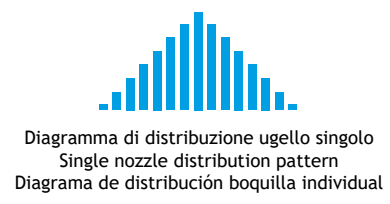
Fungicides
Suitable for

Insecticides
Suitable for

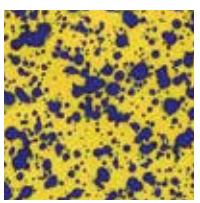
- Angolo di spruzzo di 110°.
 - Riduzione della deriva in presenza di vento superiore al 66%.
 - Grosse gocce cariche di aria per assicurare una maggiore copertura della superficie fogliare.
 - Permettono la sostituzione diretta degli ugelli di tipo Flat Fan.
 - Completamente smontabile per una facile manutenzione.
 - Stampato in resina acetaleica, ad alta stabilità chimica, che conferisce ottime caratteristiche di durata.
 - Certificato ENTAM e ZNT.
- 110° spray angle.
 - More than 66% of drift reduction in case of windy weather conditions.
 - Big drops containing a high amount of air ensuring larger coverage of leaf surfaces.
 - They can directly replace Flat Fan nozzles.
 - They can be fully removed for easier service.
 - Made of molded acetal resin, a polymer ensuring high chemical stability and an exceptionally long useful life.
 - Certified ENTAM e ZNT.
- Angulo de salida de 110° (CFA).
 - Más de un 66% de reducción de la deriva en condiciones de viento.
 - Gruesas gotas cargadas de aire para asegurar una mayor cobertura de la superficie.
 - hojas.
 - Permiten la sustitucion directa de las boquillas de tipo Flat Fan.
 - Completamente desmontable para un facil mantenimiento.
 - Moldeado en resina acetálica, material con alta estabilidad química, que otorga excepcionales características de duracion.
 - Certificado ENTAM y ZNT.



<p>110° Spraying angle</p>	<p>Boom Treatment</p>	<p>ISO 10625 Colour coding</p>
<p>10 pcs. cod. B1 Blister pack</p>	<p>402900xx Cap</p>	<p>Acetal Resin Material</p>






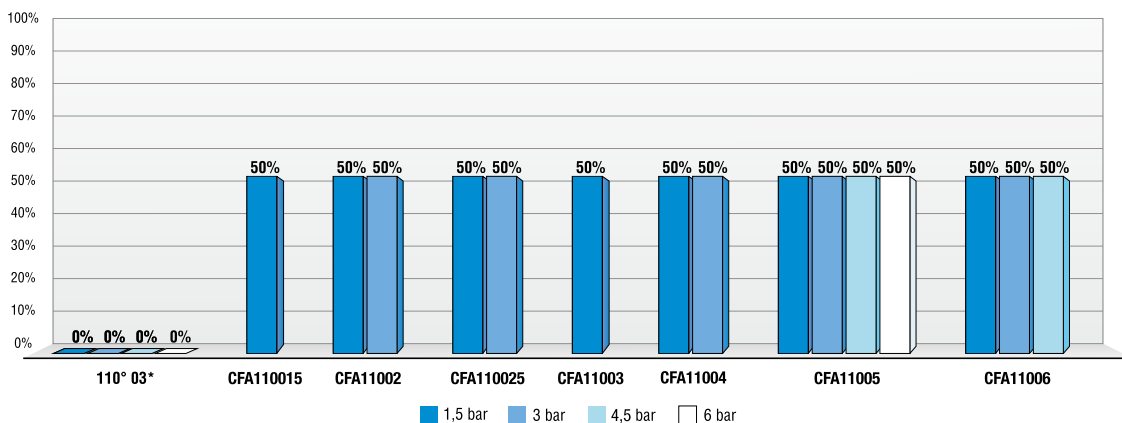
Dimensione delle gocce su bersaglio
Drop size pattern on target
Dimensiones de las gotas en el blanco



CFA

COMPACT FAN AIR

COD. CODE CÓD.	 bar	 drop	 l/min	l/ha (spazio tra gli ugelli: 50 cm)									
				l/ha (nozzle spacing: 50 cm)									
				l/ha (espacio entre las boquillas: 50 cm)									
				4km/h	6km/h	8km/h	10km/h	12km/h	14km/h	16km/h	18km/h	20km/h	25km/h
CFA11001	1.5	VC	0.28	85	57	42	34	28	24	21	19	17	14
	3	C	0.40	120	80	60	48	40	34	30	27	24	19
	5	M	0.52	155	103	77	62	52	44	39	34	31	25
	7	M	0.61	183	122	92	73	61	52	46	41	37	29
CFA110015	8	M	0.65	196	131	98	78	65	56	49	44	39	31
	1.5	XC	0.42	127	85	64	51	42	36	32	28	25	20
	3	C	0.60	180	120	90	72	60	51	45	40	36	29
	5	C	0.77	232	155	116	93	77	66	58	52	46	37
CFA11002	7	M	0.92	275	183	137	110	92	79	69	61	55	44
	8	M	0.98	294	196	147	118	98	84	73	65	59	47
	1.5	XC	0.57	170	113	85	68	57	48	42	38	34	27
	3	VC	0.80	240	160	120	96	80	69	60	53	48	38
CFA110025	5	C	1.03	310	207	155	124	103	89	77	69	62	50
	7	C	1.22	367	244	183	147	122	105	92	81	73	59
	8	C	1.31	392	261	196	157	131	112	98	87	78	63
	1.5	XC	0.71	212	141	106	85	71	61	53	47	42	34
CFA11003	3	VC	1.00	300	200	150	120	100	86	75	67	60	48
	5	C	1.29	387	258	194	155	129	111	97	86	77	62
	7	C	1.53	458	306	229	183	153	131	115	102	92	73
	8	C	1.63	490	327	245	196	163	140	122	109	98	78
CFA11004	1.5	XC	0.85	255	170	127	102	85	73	64	57	51	41
	3	VC	1.20	360	240	180	144	120	103	90	80	72	58
	5	C	1.55	465	310	232	186	155	133	116	103	93	74
	7	C	1.83	550	367	275	220	183	157	137	122	110	88
CFA11005	8	C	1.96	588	392	294	235	196	168	147	131	118	94
	1.5	XC	1.13	339	226	170	136	113	97	85	75	68	54
	3	VC	1.60	480	320	240	192	160	137	120	107	96	77
	5	C	2.07	620	413	310	248	207	177	155	138	124	99
CFA11006	7	C	2.44	733	489	367	293	244	209	183	163	147	117
	8	C	2.61	784	523	392	314	261	224	196	174	157	125
	1.5	XC	1.41	424	283	212	170	141	121	106	94	85	68
	3	VC	2.00	600	400	300	240	200	171	150	133	120	96
CFA11008	5	C	2.58	775	516	387	310	258	221	194	172	155	124
	7	C	3.06	917	611	458	367	306	262	229	204	183	147
	8	C	3.27	980	653	490	392	327	280	245	218	196	157
	1.5	XC	1.70	509	339	255	204	170	145	127	113	102	81
CFA11008	3	C	2.40	720	480	360	288	240	206	180	160	144	115
	5	C	3.10	930	620	465	372	310	266	232	207	186	149
	7	C	3.67	1.100	733	550	440	367	314	275	244	220	176
	8	C	3.92	1.176	784	588	470	392	336	294	261	235	188
CFA11008	1.5	XC	2.26	679	453	339	272	226	194	170	151	136	109
	3	VC	3.20	960	640	480	384	320	274	240	213	192	154
	5	C	4.13	1239	826	620	496	413	354	310	275	248	198
	7	C	4.89	1466	978	733	587	489	419	367	326	293	235
CFA11008	8	C	5.23	1568	1045	784	627	523	448	392	348	314	251



Riduzione della deriva in funzione di portata e pressione.
Drift reduction according to flowrate and pressure.
Reducción de la deriva de acuerdo al caudal y la presión.

Prove effettuate presso l'istituto **JKI** in Germania.

Tests made at **JKI** Institute in Germany.

Pruebas llevadas en el Instituto **JKI** en Alemania.

*Ugello di riferimento
*Reference nozzle
*Boquilla de referencia